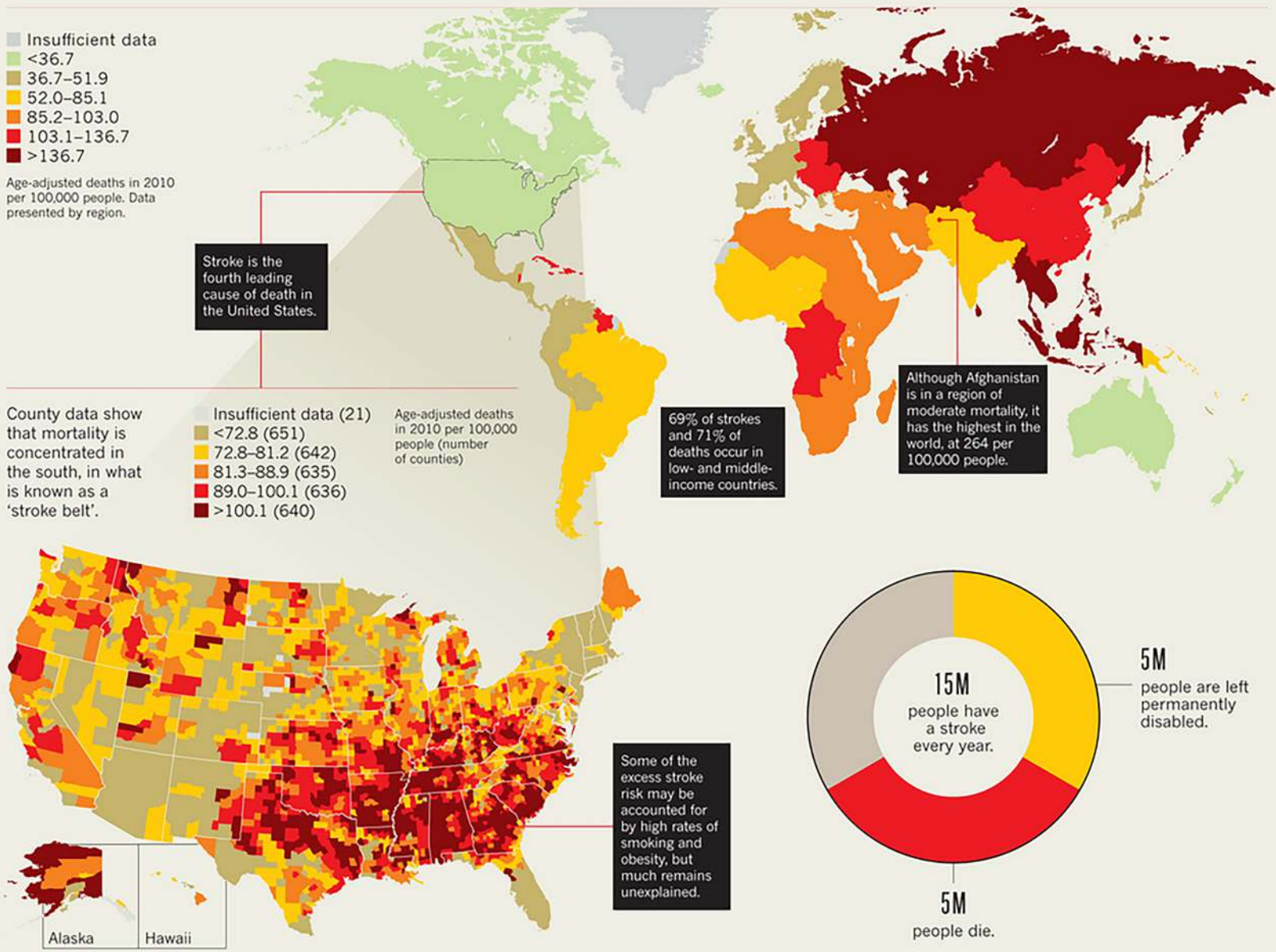


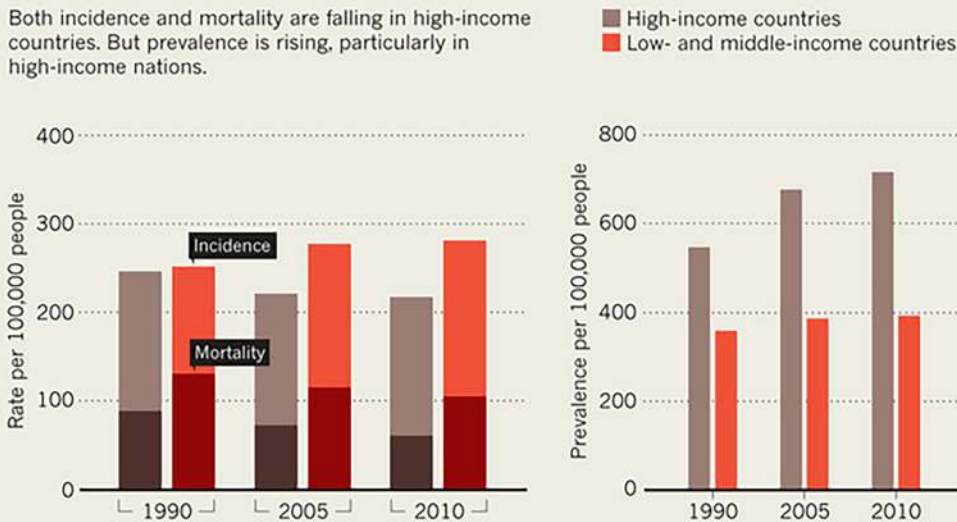
# DEADLY TRENDS

Stroke is responsible for roughly one-tenth of deaths, making it the second most common cause after heart disease worldwide. Death rates are highest in Eastern Europe, Russia and southeast Asia, regions that tend to lack specialized health services for treatment.



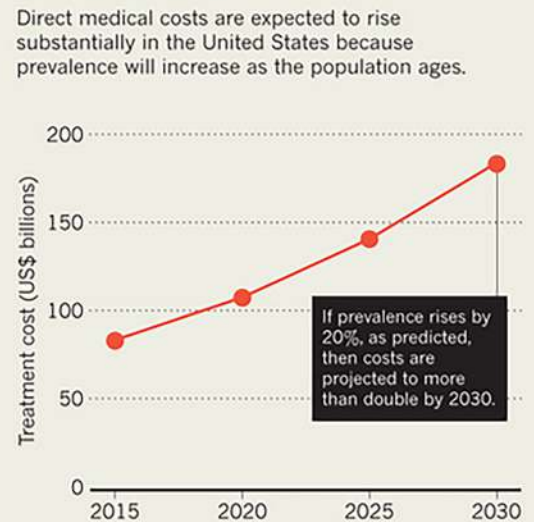
## AGE CONCERN

Both incidence and mortality are falling in high-income countries. But prevalence is rising, particularly in high-income nations.



## FINANCIAL TIMES

Direct medical costs are expected to rise substantially in the United States because prevalence will increase as the population ages.



From the article:

Stroke: A growing global burden

Zoë Corbyn

Nature 510, S2-S3 (26 June 2014) doi:10.1038/510S2a